



2 LADIES

SPECTACULAR,
FORWARD FACING
FULL GYM

ALL DECKS
ACCESSIBLE BY A
GLASS ELEVATOR

ZERO SPEED
STABILIZERS

Length: 46.35 meters

Guests: 12

Total Crew: 10

Summer Cruising Areas: France, Corsica, South of France, Italy, Naples, Riviera, Sardinia, Sicily

Available in the summer from

Euro **210.000** / week

Available in the winter from

Euro **190.000** / week

Launched in 2012, 2 LADIES offers all the amenities you would expect from a great charter yacht – and more!

This 152' steel displacement yacht was created by collaboration between Mulder Design, Studio Spadolini and Rossinavi and wows with a high volume, sophisticated interior and high quality finish.

2 LADIES was designed for worldwide cruising in all weathers and has a range of over 4,500 nautical miles. Full Lloyd's classification makes sure that each trip will be made at the highest level of safety, whereas Naiad zero speed stabilizers ensure smooth anchoring at all times.

Three decks offer lots of gathering areas: From the main deck with large dining area for up to 10 persons to the wheel house deck with a comfy seating area aft with coffee tables and a generous seating & sunbathing area on the fore deck to the fully equipped fly bridge with sun loungers, sunbathing area, Jacuzzi, bar, & BBQ – you are spoilt for choice!

All decks can be accessed via a glass elevator, which is embedded in the exposed staircase, and represents the centerpiece of this imposing yacht; the elevator is also suitable for wheel chairs (maximum width 23 inches).

The staircase is made from ebony and steel, whereas the steps are made from travertine marble, treated to resemble orange peel. The marble's porosity was enhanced so that the light flushes the structure; thus the steps are illuminated in a warm, non-offensive to the eye way.

2 LADIES' contemporary, minimalist interior, designed by Studio Spadolini, features walnut wood floorings mixed with brushed ash wood, glossy varnished ebony and ceilings with lacquered and illuminated panels, creating an airy ambience.

Up to 12 guests can be easily accommodated as follows:

The full beam master suite on the wheelhouse deck –

is kept in contemporary Italian style and includes a spacious king-size bed (180cm x 200cm), a comfortable seating area and a study.

The en suite facilities are equipped with a jet shower, Jacuzzi tub and sink, all with marble finishes, as well as toilet, bidet and towel warmer.

The stylish walk-in closet contains lots of storage space. This cabin comes furnished with the latest technology that includes a 60" flat screen TV, a stereo with an iPod docking station and speakers.

Offers access to the wheelhouse deck as well as to the wheelhouse lounge.

The full beam master suite on the main deck –

reflects a natural feel with rich layers of black, grey and white hues and is furnished with a king-size bed (180cm x 200cm), spacious lounge area, desk, 60" flat screen TV and a walk in closet.

The en-suite facilities are equipped with a Jacuzzi tub, jet shower, sink, all with marble finishes; as well as a towel warmer, toilet and bidet.

The port side VIP cabin –

comes with a double bed (160cm x 200cm), large work desk, 32" flat screen TV and two closets.

The spacious en suite facilities are furnished with a shower, sink, toilet and bidet.

The star board VIP cabin –

features a plush double bed (160cm x 200cm), large working desk, 32" flat screen TV and two closets. The en suite is lavished with a shower, sink, toilet and bidet.

The port side guest cabin -

comes with two single beds (90cm x 200cm) that share a bedside table, 32" flat screen TV, and a closet. The impressive en suite includes a shower, sink, toilet and bidet.

The star board guest cabin -

features two single beds (90cm x 200cm) that conveniently transform into a comfortable double bed. Equipped with two bedside tables, 32" flat screen TV and a closet. The lush en suite includes a shower, sink, toilet and bidet.

2 LADIES also offers a spectacular, forward facing gym, which is situated on the main deck and is fully equipped with the latest generation of Technogym equipment and a pop-up TV.

The lower deck features a beach club, sauna and an additional bathroom; there is a side opening door for the tender so that the aft area is effectively always available as a beach club.

These amenities, together with a high end entertainment system and an impressive selection of water toys, make sure there won't be a dull moment on board and round off the great charter package that is 2 LADIES!

YACHT DETAILS

Guests:	12	Total Staterooms:	6
Total Crew:	10	Length:	46.35 meters
Built:	2012	Builder:	Rossinavi
Cruising Speed:	12 knots		

WATERTOYS

Various

Castoldi jet tender 21, 260 HP /RSQ
rescue boat for 6 people, 25 HP / 2 x
Yamaha VXS wave runner (3-seater) / 1 x
monoski / dive gear: 6 DIN Valve 11L
Aluminium tanks (2 DIN – YOLK
connectors for these tanks), 3 CRESSI
BCD's 1 Small 1 Med 1 Large, 3 SCUBAPRO
Regulators (DIN) / 1 x waterskis / 2 X F5
Sea-bobs / 1 x waterskate / 2 x donut / 1 x
inflatable couch / 1 x inflatable stingray /
snangetti tubes / dive-instructor on

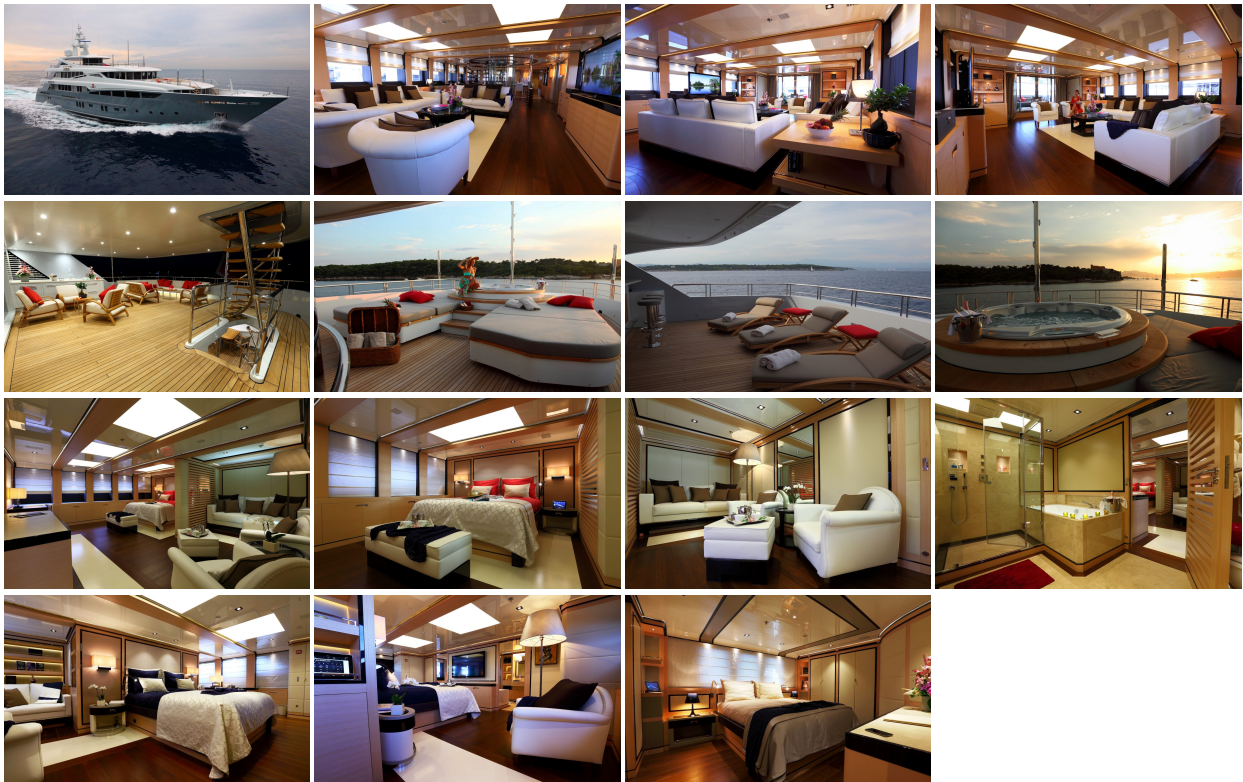
opagneur tubes / one instructor on request, yacht is a jet ski training centre / sauna / 1 x Di Blasi electric motorbike / Eclipse Aqua Jump 150 Trampoline / Water Whoosh Mat 20'

The full width GYM is situated on the main deck in front of the master cabin (independent access from the corridor)
The dimensions of the room are 2.30 x 5.60 m,

GYM equipment all TECHNOGYM brand:

Crosstrainer Vario 700 VISIOWEB
Group cycle (bike)
Treadmill Run Personal
Personal Kinesis MD 05-13S
Wellness weights
Ball
Cardio measurement

Pop-up TV in Gym



This document is not contractual. All specifications are given in good faith and offered for informational purposes only. AqvaLuxe does not warrant or assume any legal liability or responsibility for the accuracy, completeness, or usefulness of any information and/or images displayed. Yacht inventory, specifications and charter prices are subject to change without prior notice. None of the text and/or images used in this brochure may be reproduced without written consent from the publisher.

AqvaLuxe Yachts, L'Hirondelle - 15, Rue Princesse Antoinette 98000 Monte Carlo Monaco.
Tel: +377 97 70 31 36 Fax: +377 97 70 31 37 Email: info@aqvaluxe.com