



48 Open

Builder: Viking Yachts
Model: 48 Open
Built: 2018
Length: 15.00 meters

PLEASE ENQUIRE FOR PRICE

At the 2016 Fort Lauderdale International Boat Show in November, the popular 48 Convertible has been joined by a pair of stable mates, a 48 Open with a Palm Beach Towers' tuna tower and the 48 Sport Tower. Following in the successful wakes of the Viking 42 Open and Viking 52 Open, which produced the well received 42 Sport Tower and 52 Sport Tower based on the 42 Convertible and 52 Convertible hulls respectively, the 48 series will blossom similarly with these exciting and versatile additions to our product line.

With its diamond polished sheer line, raked stem with a razor sharp entry and a one-piece fiberglass wraparound windshield, the 48 Open with tuna tower looks like a marathon athlete in major motion. The Palm Beach Towers' custom accessory fits like a fine leather glove creating a confluence of beautiful design and proportions from bow to stern, from the waterline to the buggy top. The 48 Sport Tower features a three-sided fiberglass air conditioned deckhouse and a custom Palm Beach Towers' tuna tower adding dashing definition and versatility. This version also will be available sans tower in our savoir-faire Sport Coupe rendition. Similarly, the 48 Open can be delivered without a tuna tower as a sleek express yacht.

YACHT DETAILS

Builder:	Viking Yachts	Model:	48 Open
Built:	2018	Total Staterooms:	2
Bathrooms:	1	Tax / Lease:	ex VAT
Location:	Viking Yacht Co, Bass River, NJ, United States		

YACHT CONSTRUCTION

Length:	15.00 meters	Waterline Length:	16.20 meters
Beam:	5.20 meters	Draft:	1.39 meters
Displacement:	29,000.00 kg	Hull Material:	Fiberglass
Hull Configuration:	Planing		

YACHT SPECIFICATION

Engines:	2 x MAN V8-1200CRM Fuel: Diesel	Total Power:	2400 HP
-----------------	------------------------------------	---------------------	---------

Drive Type: Shaft
Power: 2400HP

Fuel Capacity:

4.504 litres

Generators:

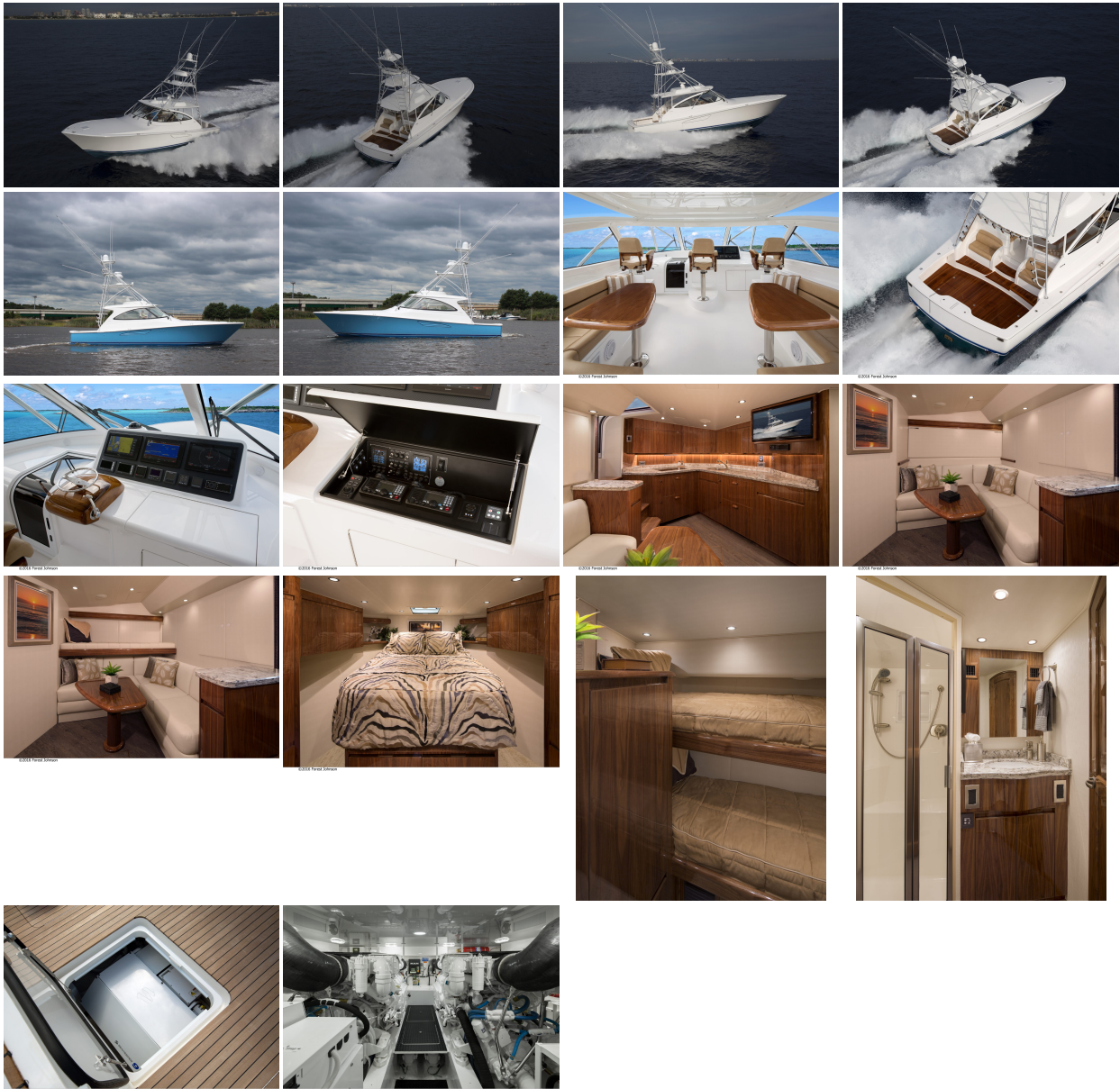
1 x 21.5 kW Onan

Fresh Water Tanks:

674 litres

Holding Tanks:

197 litres



This document is not contractual. All specifications are given in good faith and offered for informational purposes only. AqvaLuxe does not warrant or assume any legal liability or responsibility for the accuracy, completeness, or usefulness of any information and/or images displayed. Yacht inventory, specifications and charter prices are subject to change without prior notice. None of the text and/or images used in this brochure may be reproduced without written consent from the publisher.

AqvaLuxe Yachts, L'Hirondelle - 15, Rue Princesse Antoinette 98000 Monte Carlo Monaco.
Tel: +377 97 70 31 36 Fax: +377 97 70 31 37 Email: info@aqvaluxe.com