



Alemia

FIVE STATEROOMS SARDINIAN CAPTAIN ITALIAN CHEF

Length: 32.00 meters

Guests: 10

Total Crew: 5

Summer Cruising Areas: Sardinia, Naples, Corsica

Winter Cruising Areas: Sardinia

Available in the summer from

Euro **55.000** / week

Available in the winter from

Euro **45.000** / week

The Italcraft 105 is a maxi open with eye-catching lines and a 50-square-metre deck capable of accommodating a whole plethora of passengers in the greatest of comfort.

Needless to say, performance is a major issue with a craft as sporty as this one. Twin 2400 hp MTU common rail engines coupled with Ameson surface drives ensure that the Italcraft 105 hits a very impressive 41 knots flat out and cruises contentedly at 36 knots (with a 400-mile range to boot).

The stern platform leads up to the cockpit where a sun pad extends all the way to the roomy sofa. Moving forward we find a C-shaped dinette with extendible table that seats 8 to 10 and is served by a fridge-bar unit with barbecue. The dinette is shaded by the deckhouse overhang which extends for a couple of metres electrically so that it can cover almost all of the cockpit. Wide walkways and high sides lead forward to a 19-square-metre sun pad and a sea-front sofa.

YACHT DETAILS

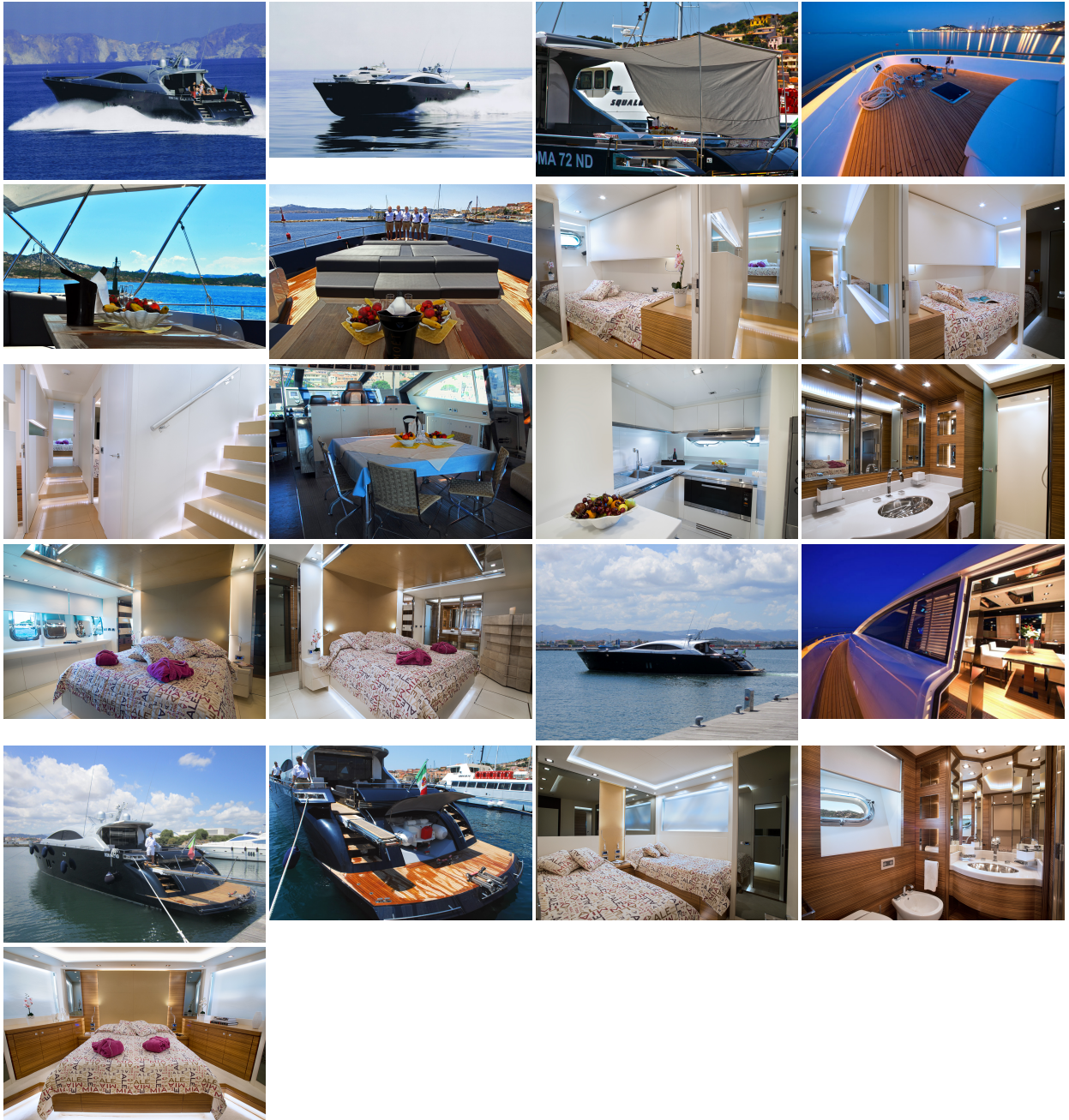
Guests:	10	Total Staterooms:	5
Total Crew:	5	Length:	32.00 meters
Built:	2009	Builder:	Rizzardi Italcraft
Cruising Speed:	30 knots		

WATERTOYS

Tenders
420 Zodiac ProJet

WaterScooters × 2
2 x SEADOO Electric water scooters (not wave runners or jetskis)

Inflatables
Donut and towable banana for 4 people



This document is not contractual. All specifications are given in good faith and offered for informational purposes only. AqvaLuxe does not warrant or assume any legal liability or responsibility for the accuracy, completeness, or usefulness of any information and/or images displayed. Yacht inventory, specifications and charter prices are subject to change without prior notice. None of the text and/or images used in this brochure may be reproduced without written consent from the publisher.