



## 42 Convertible

**Builder:** Viking Yachts  
**Model:** 42 Convertible  
**Built:** 2017  
**Length:** 12.97 meters

PLEASE ENQUIRE FOR PRICE

While it has been a tradition at Viking to introduce new models on a regular basis, for each new boat that is launched, there are others waiting in the wings on our design department's drawing boards. Rather than adjusting to market trends, the forward thinking philosophy that drives the company provides a heady commitment to future models. One such model whose time has arrived is the Viking 42 Convertible.

An extremely smart looking package, the 42 Convertible shares many of the sleek, styling features of its larger stable mates. The fixed, darkly tinted salon windows blend purposely and adroitly with the metallic black mask, like a distinctive visor above the snow white foredeck. The rake of the stem, windshield and flying bridge brow demonstrate how well proportioned this yacht truly is. There's nearly 16 feet of beam providing a choice of two or three staterooms with room and comfort to spare. The master stateroom forward has a full size island bed and access to a private head with a sizeable fiberglass shower stall. The second head also with a shower serves the remaining staterooms and located off the companionway, is ideal for day use. In the air conditioned deckhouse, every available inch has been put to good use to include a comfortable sofa, a dinette and a practical galley with under counter refrigeration, good stowage and substantial Corian counter space. The 122 square-foot cockpit sports Viking's signature observation mezzanine, a salon step drink box, a transom box, a transom door and gate and plenty of fishing room, while the flying bridge exhibits every amenity found on its larger siblings, including a center console helm providing superb visibility, good electronic stowage and ample seating. Propulsion is provided with Cummins MerCruiser diesels and Zeus pod drives.

### YACHT DETAILS

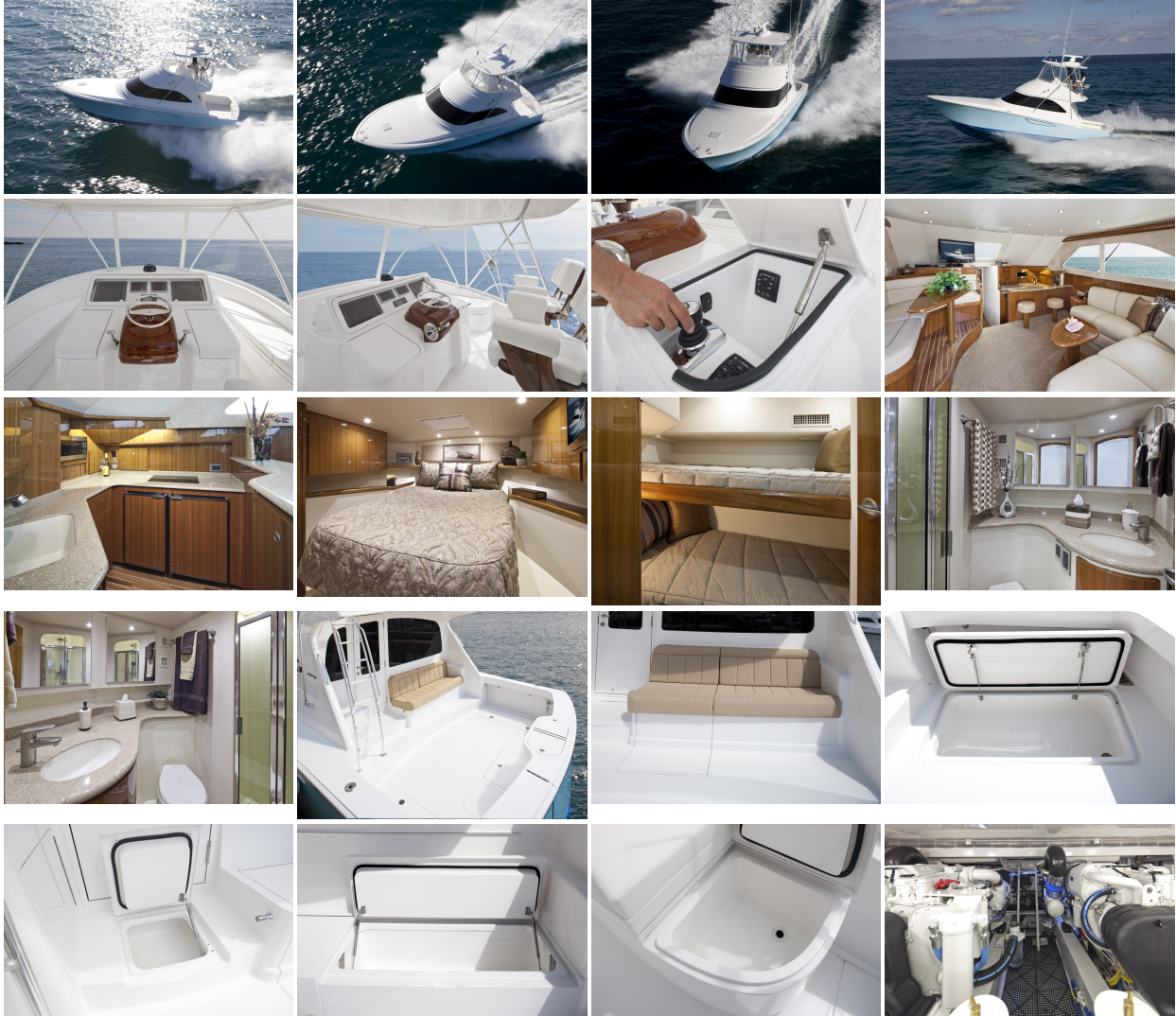
<b>Builder:</b>	Viking Yachts	<b>Model:</b>	42 Convertible
<b>Built:</b>	2017	<b>Total Staterooms:</b>	2
<b>Bathrooms:</b>	2	<b>Tax / Lease:</b>	ex VAT
<b>Location:</b>	Viking Yacht Co, Bass River, NJ, United States		

### YACHT CONSTRUCTION

<b>Length:</b>	12.97 meters	<b>Waterline Length:</b>	10.92 meters
<b>Beam:</b>	4.83 meters	<b>Draft:</b>	1.09 meters
<b>Displacement:</b>	17,000.00 kg	<b>Hull Material:</b>	Fiberglass
<b>Hull Configuration:</b>	Planing		

**YACHT SPECIFICATION**

<b>Engines:</b>	2 x Cummins QSC-600 Fuel: Diesel Drive Type: Pod Power: 600HP	<b>Total Power:</b>	1200 HP
<b>Fuel Capacity:</b>	1.987 litres	<b>Generators:</b>	12kW Onan
<b>Fresh Water Tanks:</b>	454 litres	<b>Holding Tanks:</b>	148 litres



This document is not contractual. All specifications are given in good faith and offered for informational purposes only. AqvaLuxe does not warrant or assume any legal liability or responsibility for the accuracy, completeness, or usefulness of any information and/or images displayed. Yacht inventory, specifications and charter prices are subject to change without prior notice. None of the text and/or images used in this brochure may be reproduced without written consent from the publisher.